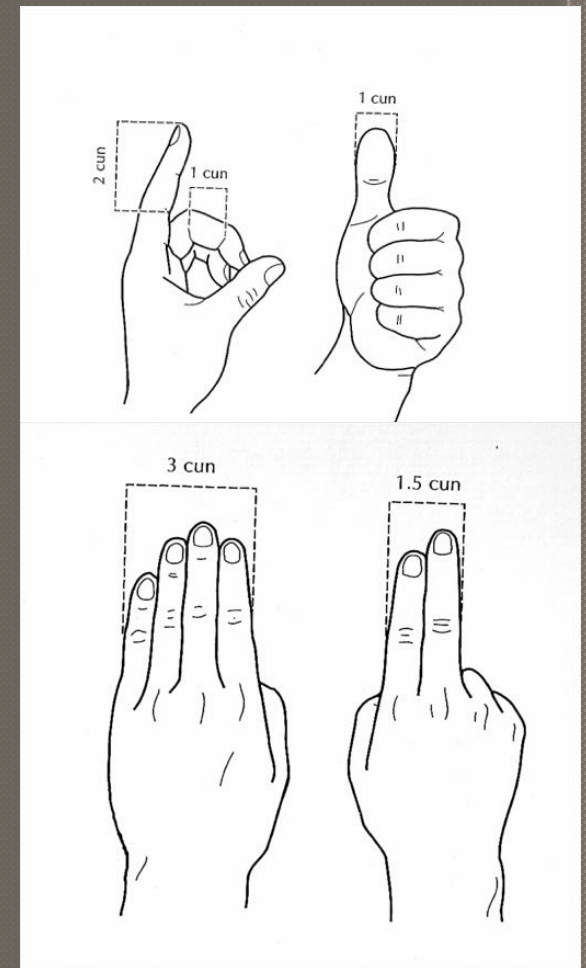
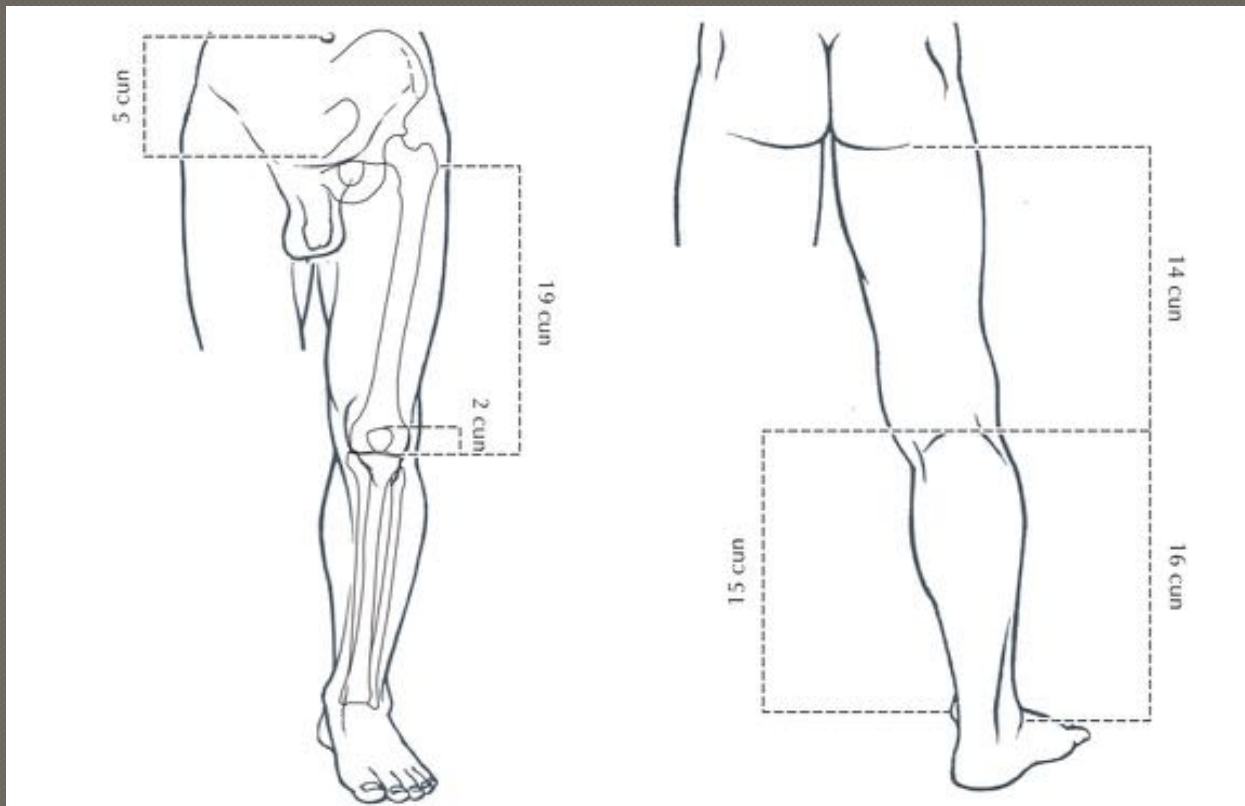


***Point Location:
Liver Meridian***

Foot Jue Yin

Leg Cun Measurements

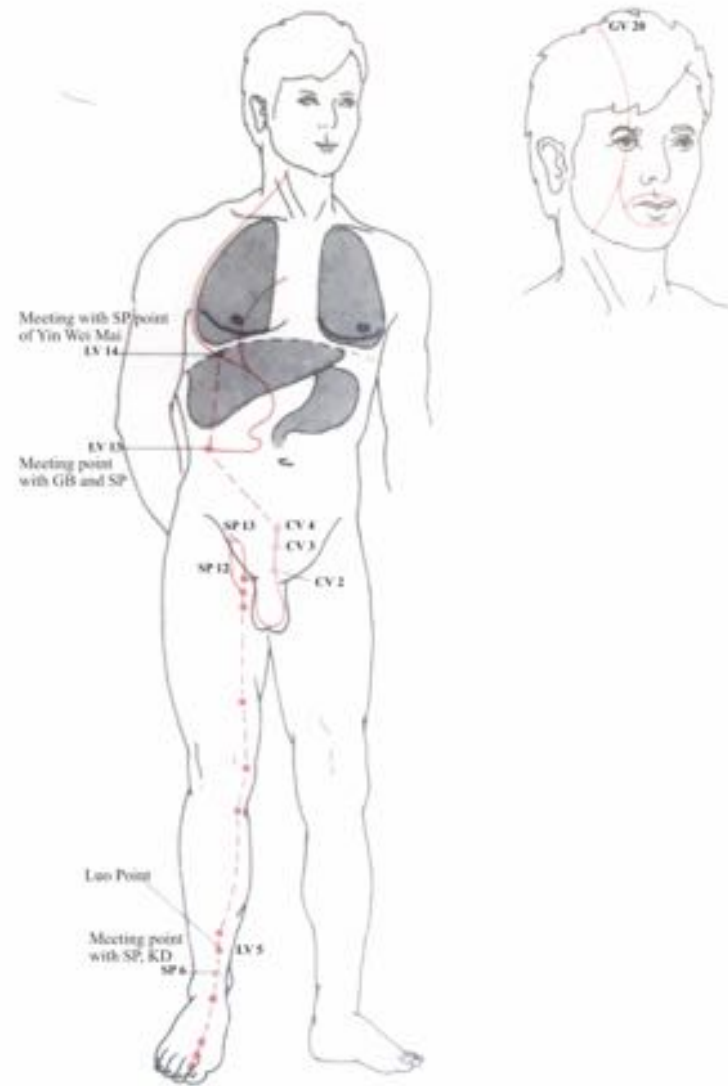
Cun—a proportional unit of measure



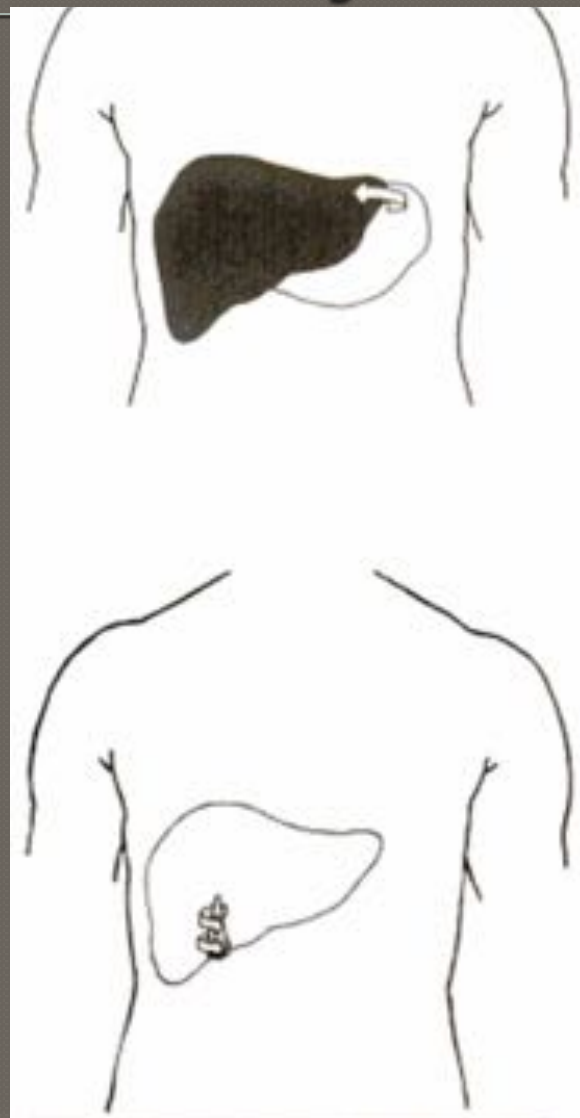
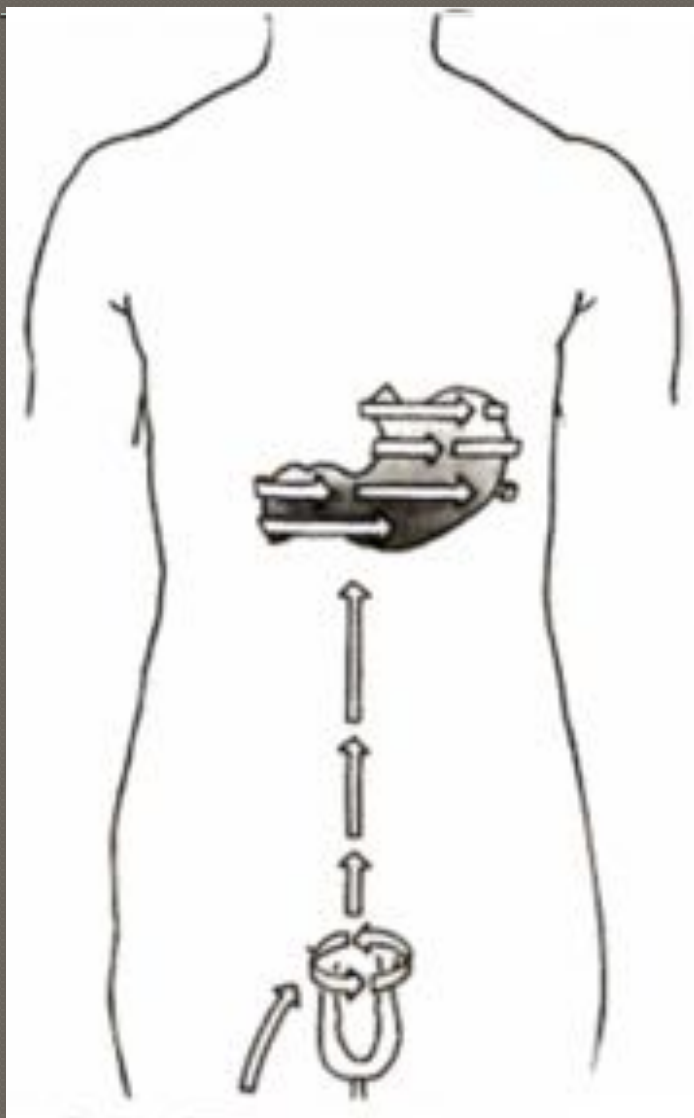
Liver Meridian

Foot Jue Yin

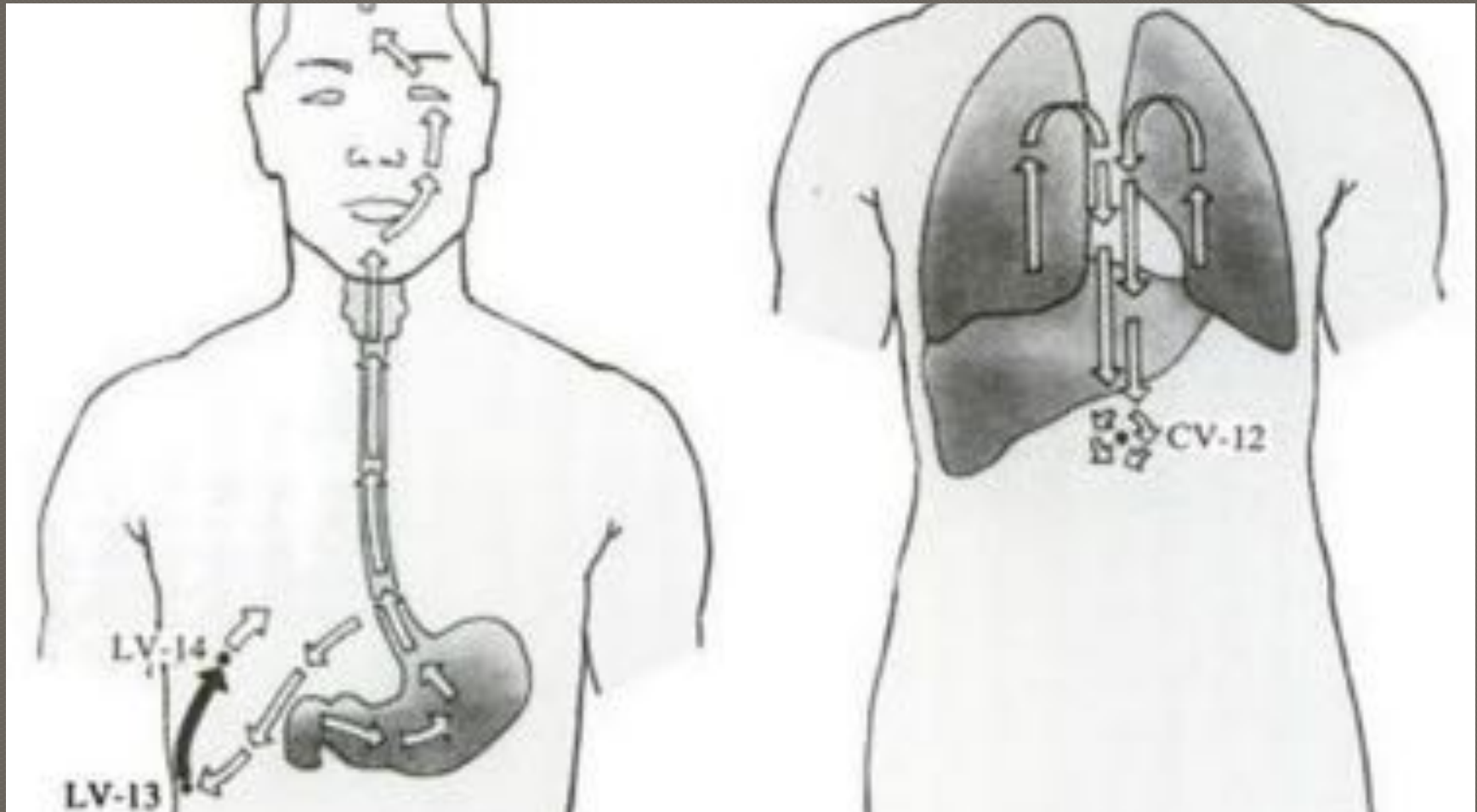
Internally, the meridian connects at the groin from LV 11 to SP 12 and 13 and descends to the genitalia, connecting CV 2,3 and 4. It then ascends to surround the Stomach, then enters the Liver organ which it permeates and then wraps the gallbladder. It also passes up and to the sides and connects to LV 13 and then re-enters internally at LV 14. From there one branch ascends through the diaphragm, up through the back of the larynx to connect with the eye and then finally ends at GV 20. Another branch from the eye descends to encircle the lips. A second branch from the liver ascends and connects to the lungs then back to CV 12.



Liver Meridian Internal Projection

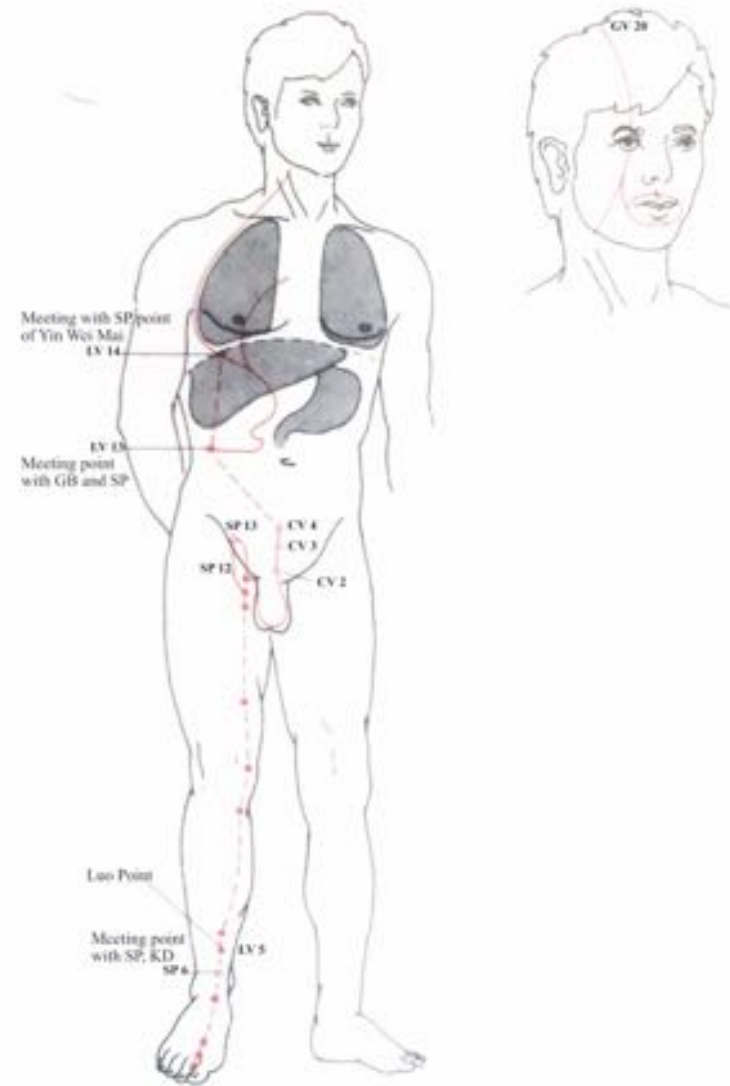


Liver Meridian Internal Projection



Liver Meridian Foot Jue Yin

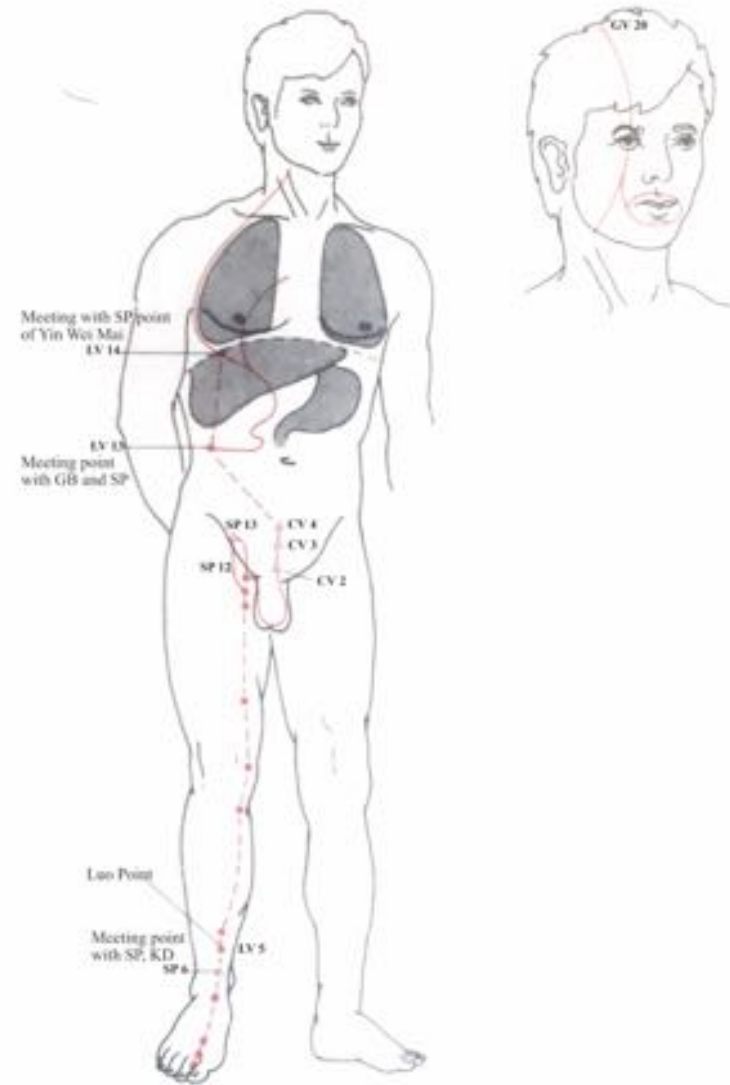
Externally, the meridian starts on the lateral aspect of the dorsum of the great toe and ascends between the 2nd and 3rd metatarsal bones to the ankle, up the tibia bone to the knee where it crosses the Spleen meridian, and in the thigh courses up the inner thigh between the Spleen meridian which is more anterior and the Kidney meridian which is more posterior. It then connects from CV 4 to LV 13 and then ends at LV 14



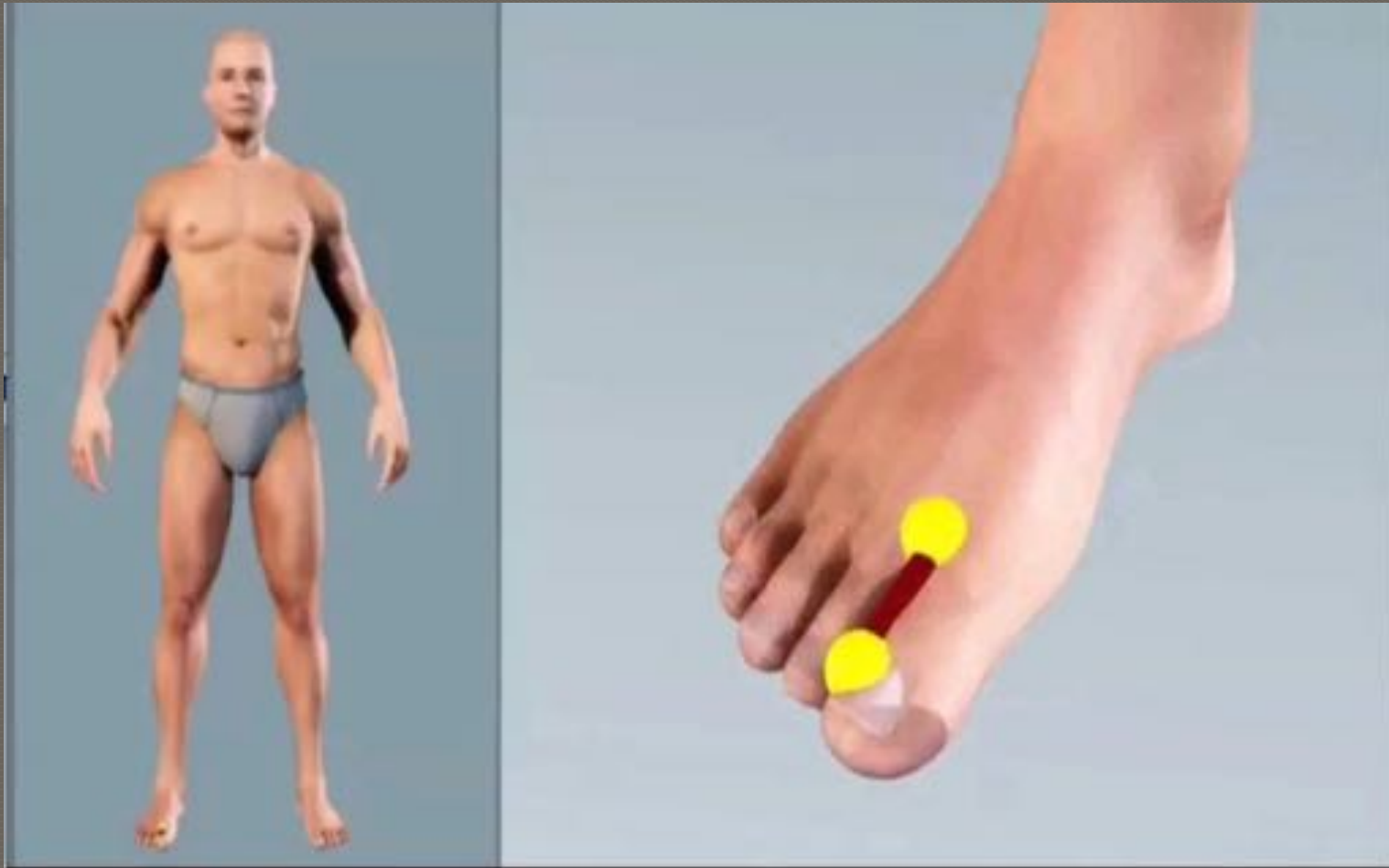
Liver Meridian Foot Jue Yin

Points to know:

LV 1, 2, 3, 4, 5, 8, Inner Thigh points and 13, 14



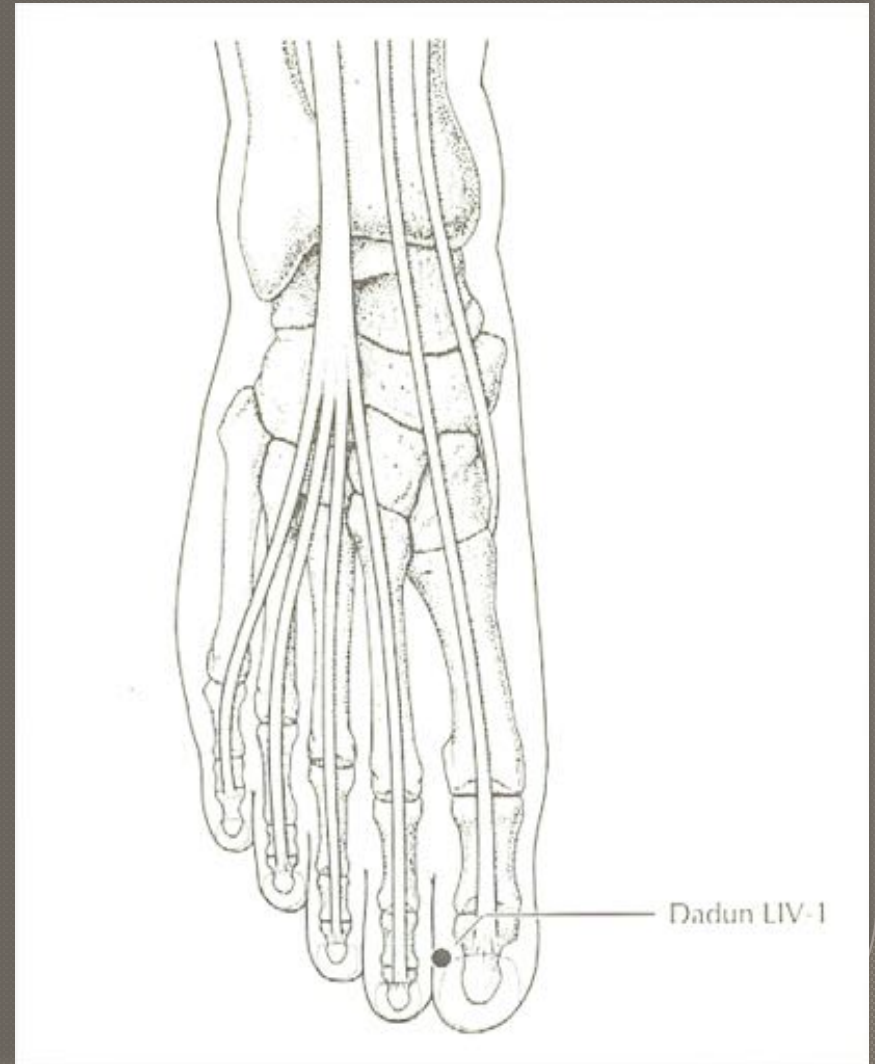
Liver Meridian Trajectory



Liver 1

Foot Jue Yin

- ◉ **LV 1 –(Dadun – Big Mound)**
 - On dorsal and lateral aspect of the big toe, at the junction of the lines drawn along the lateral border and the base of the nail, 0.1 cun from the corner
 - Wood Point
- ◉ **Japanese LV 1**
 - Four possible locations, midline on dorsal aspect of big toe, just proximal to nail bed, or the TCM location, or 2 more points along line between LV 1 and LV 2, just proximal to TCM location. Choose point that releases pressure pain on either LV 14 or region of neck on right side called C3

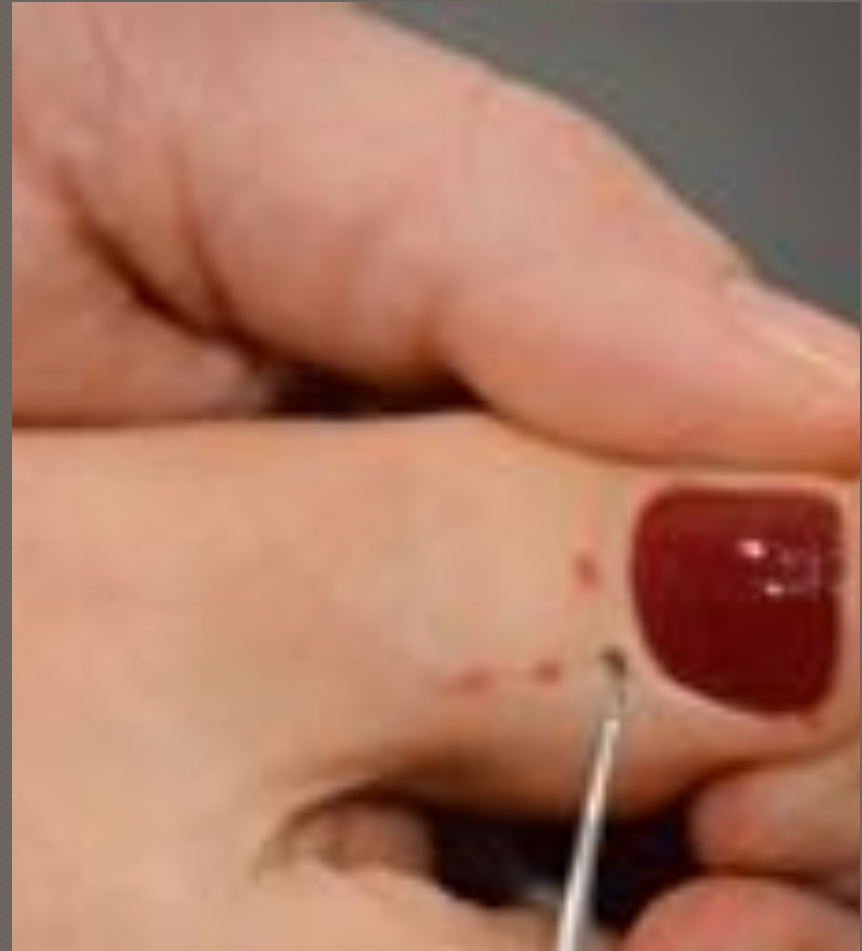


Japanese Liver 1

Foot Jue Yin

◎ Japanese LV 1

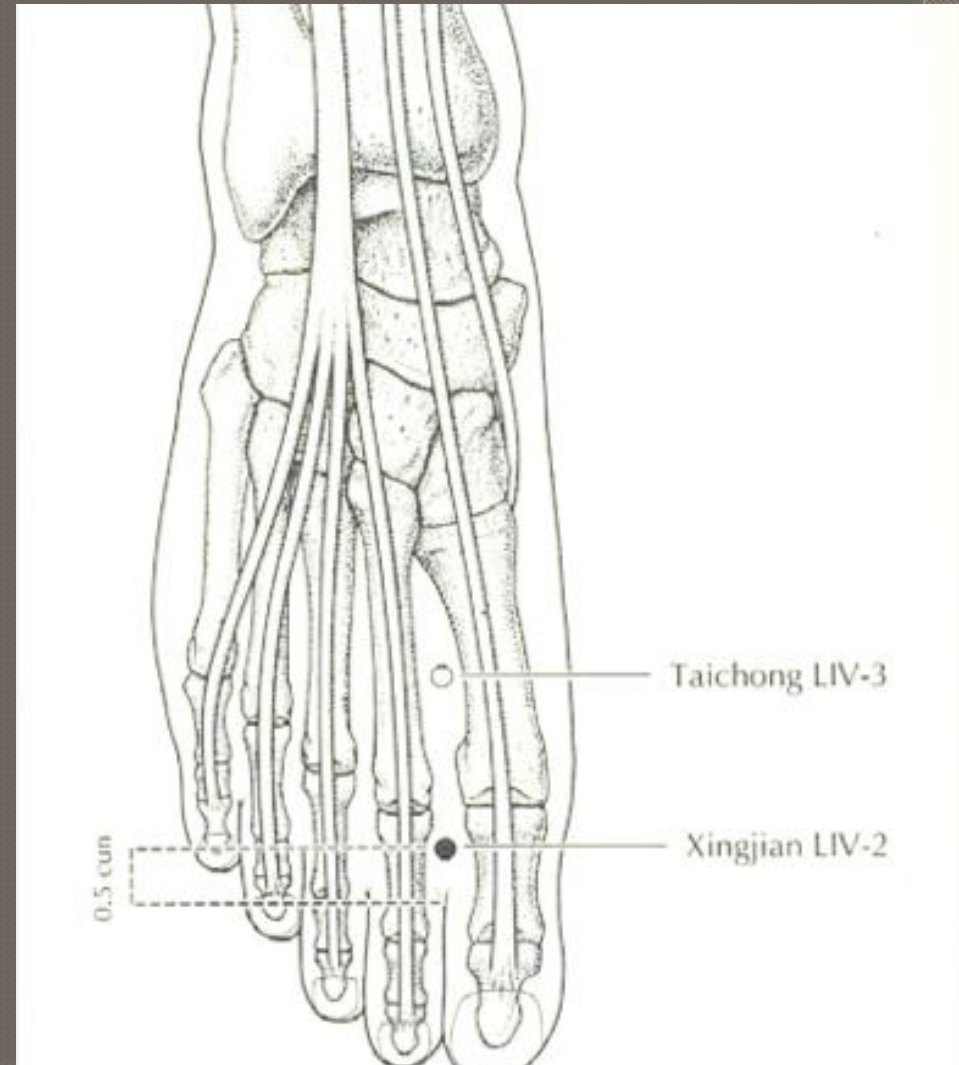
- Four possible locations, midline on dorsal aspect of big toe, just proximal to nail bed, or the TCM location, or 2 more points along line between LV 1 and LV 2, just proximal to TCM location. Choose point that releases pressure pain on either LV 14 or region of neck on right side called C3
- Wood Point



Liver 2

Foot Jue Yin

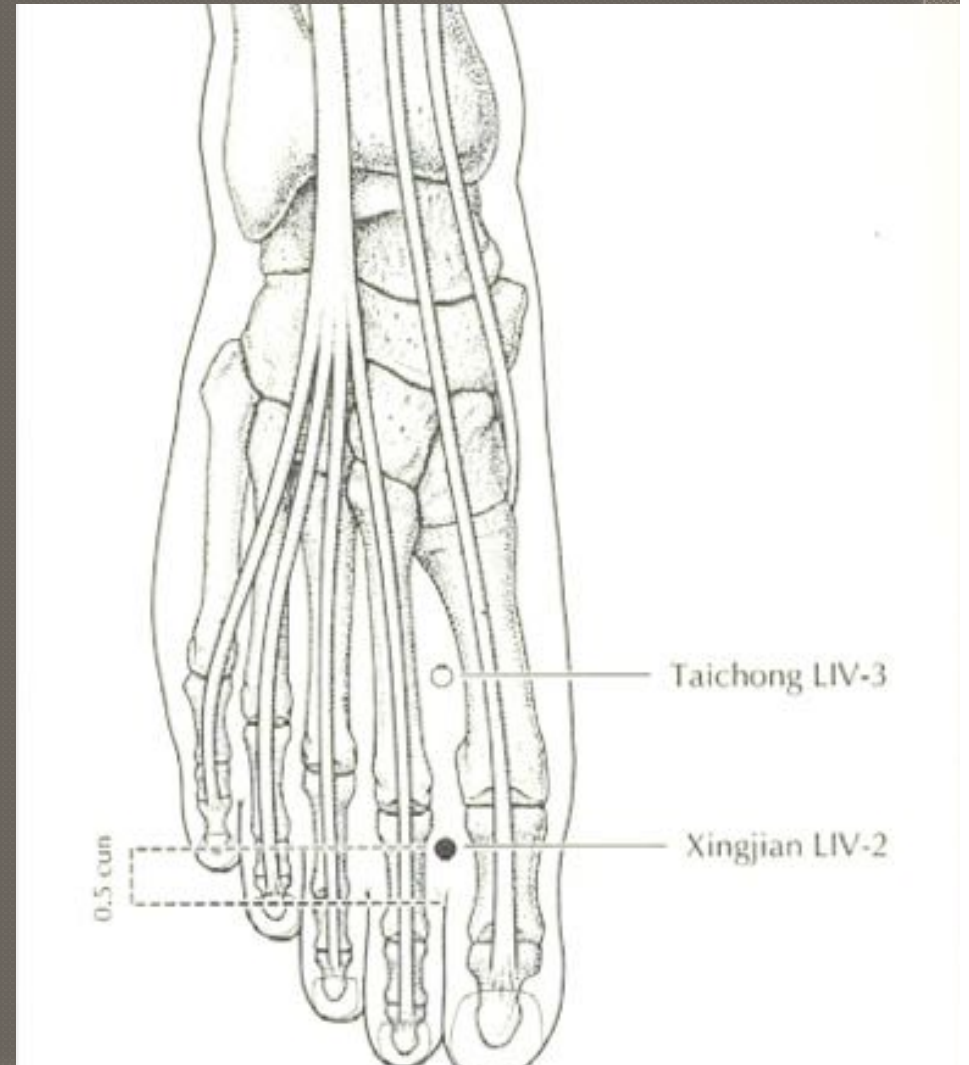
- *LV 2* – (*Xingjian* – Moving Between)
 - On dorsum of foot, between the first and second toes, 0.5 cun proximal to the web margin, lateral aspect of the big toe, at the junction of the lines drawn along the lateral border and the base of the nail, 0.1 cun from the corner, just distal to the interphalangeal joint of big toe
 - Fire Point



Liver 3

Foot Jue Yin

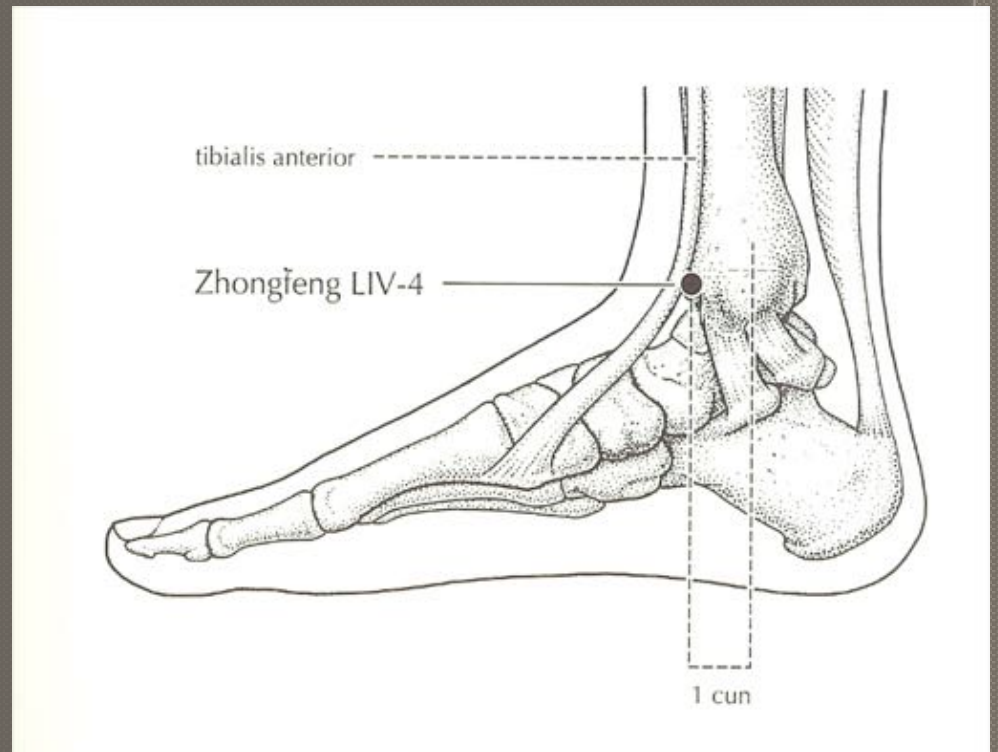
- *LV 3 – (Taichong – Great Rushing)*
 - On dorsum of foot, just distal to the junction of the 1st and 2nd metatarsal bones in the interosseous muscle
 - Yuan Source Point



Liver 4

Foot Jue Yin

- *LV 4* – (Zhongfeng – Middle Seal)
 - On the ankle, anterior to the prominence of the medial malleolus, in the depression just medial to the tibialis anterior tendon.
 - Metal Point



Liver 4

Foot Jue Yin

- *LV 4* – (Zhongfeng – Middle Seal)
 - On the ankle, anterior to the prominence of the medial malleolus, in the depression just medial to the tibialis anterior tendon.
 - Metal Point



Liver 5

Foot Jue Yin

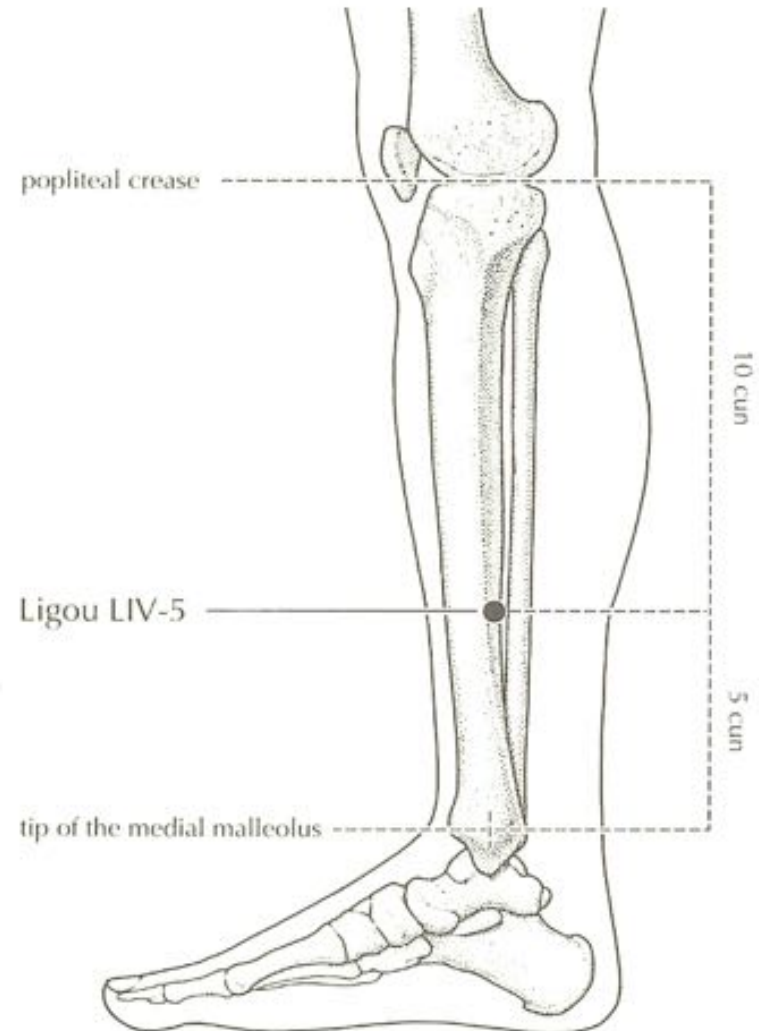
○ LV 5 – (Ligou – Woodworm Canal)

- 5 cun above the prominence of the medial malleolus, just medial to the crest of the tibia in depression between crest and medial gastrocnemius muscle

- Luo Point

○ Japanese LV 5

- Halfway between the tip of the medial malleolus and Liv8, on the tibia bone. Find a depression in the bone or a area of localized pitting edema on the bone. Where nutrient artery enters tibia bone.

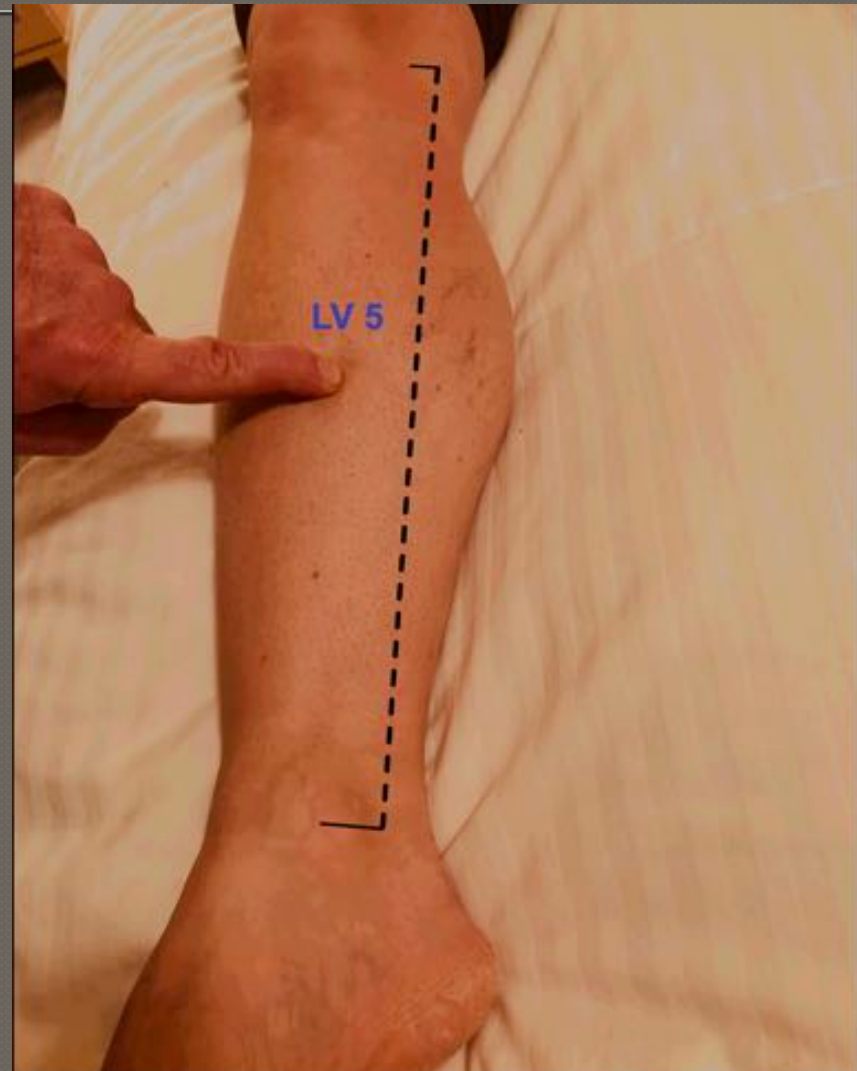


Liver 5

Foot Jue Yin

◎ Japanese LV 5

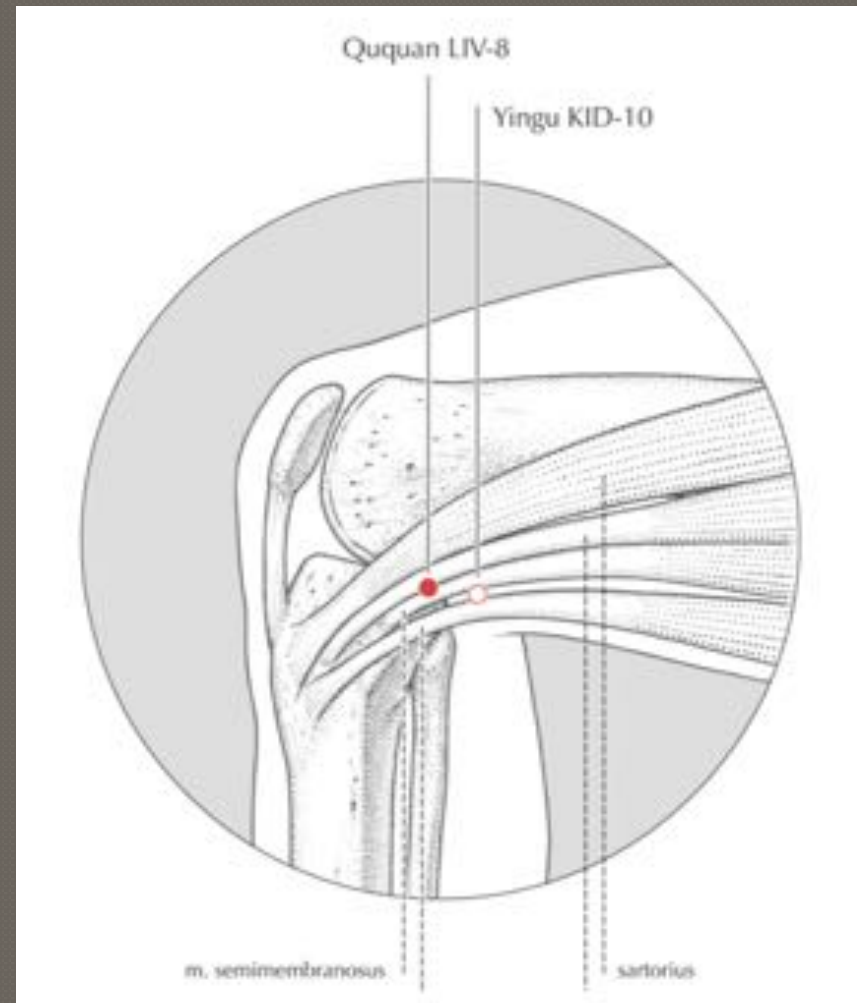
- Halfway between the tip of the medial malleolus and Liv8, on the tibial bone. Find a depression in the bone or a area of localized pitting edema on the bone. Where nutrient artery enters tibia bone.



Liver 8

Foot Jue Yin

- ◉ *LV 8 – (Taichong – Great Rushing)*
 - Just superior to the medial end of the popliteal crease, in depression just inferior to the medial femoral condyle and anterior to the tendons of the semimembranosus and the semitendinosus
 - Water Point



Liver 8

Foot Jue Yin

- **LV 8 – (Taichong – Great Rushing)**
 - Just superior to the medial end of the popliteal crease, in depression just inferior to the medial femoral condyle and anterior to the tendons of the semimembranosus and the semitendinosus



Liver Inner Thigh Points

Foot Jue Yin

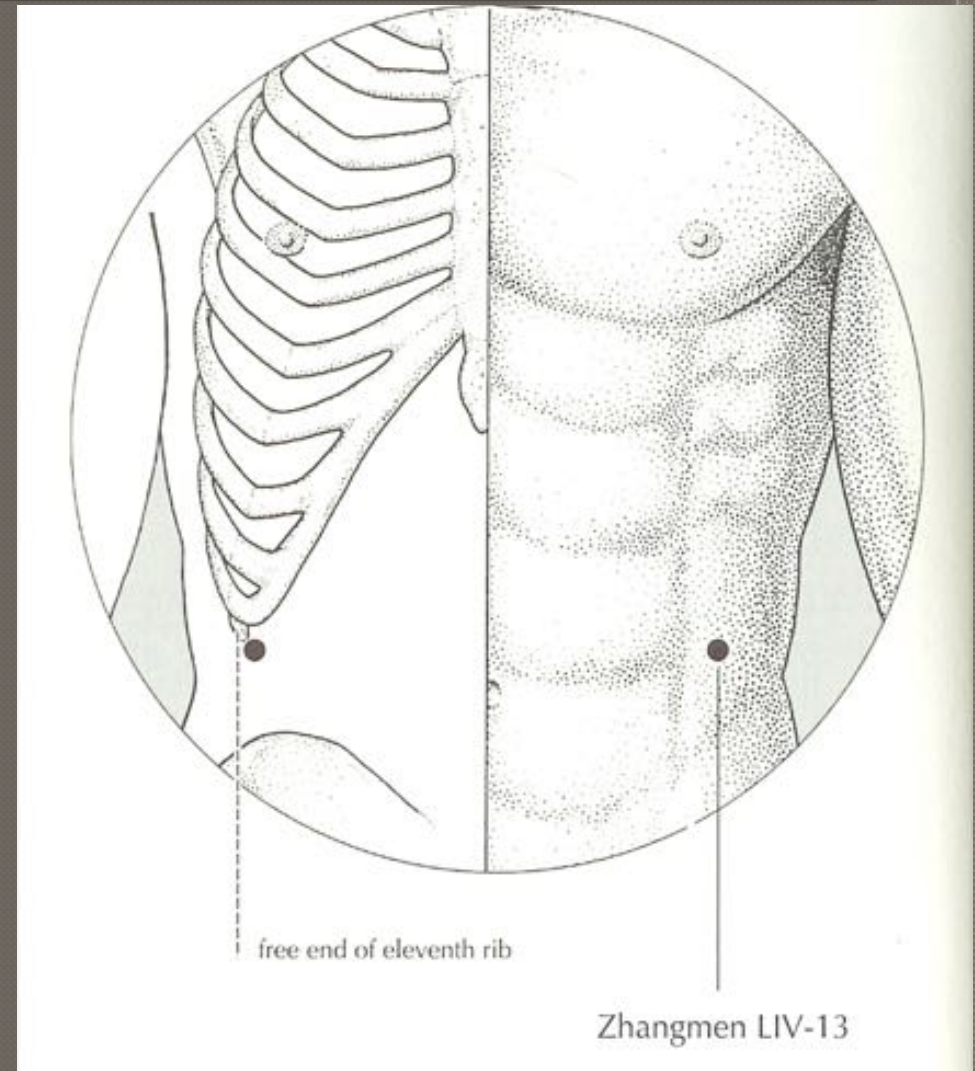
- ◉ *LV Inner thigh – (Hashimoto's Eye Points)*
 - An imaginary line is drawn on the Liver channel between Lv-8 and Lv-11 (2 cun inferior to St-30). This line is then divided into three equal sections. The two points are located one third proximal to Lv-8 and one third distal to Lv-11



Liver 13

Foot Jue Yin

- *LV 13* – (Zhangmen – Completion Gate)
 - Directly anterior to the free end of the 11th rib
 - Spleen Mu point



Liver 13

Foot Jue Yin

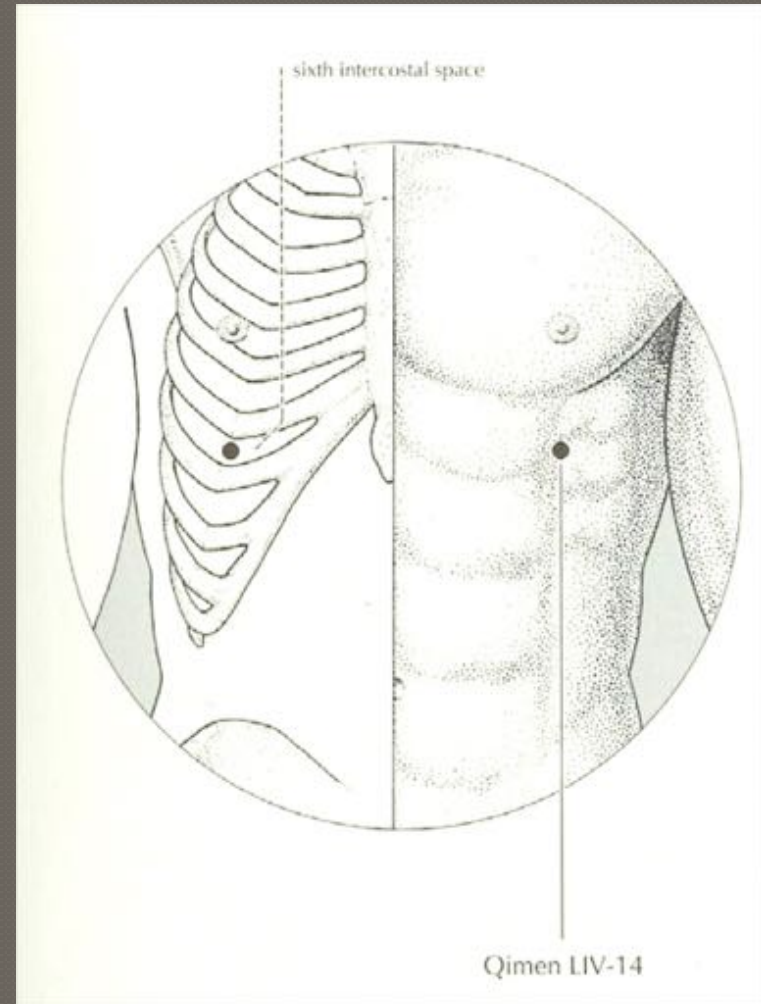
- *LV 13* – (Zhangmen – Completion Gate)
 - Directly anterior to the free end of the 11th rib
 - Spleen Mu point



Liver 14

Foot Jue Yin

- *LV 14* – (Qimen – Cycle Gate)
 - On the mammillary line, between the 6th and 7th ribs, 4 cun from midline
 - Liver Mu point



Liver 14

Foot Jue Yin

- *LV 14* – (Qimen – Cycle Gate)
 - On the mamillary line, between the 6th and 7th ribs, 4 cun from midline
 - Liver Mu Point

